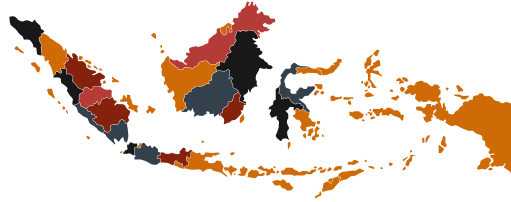
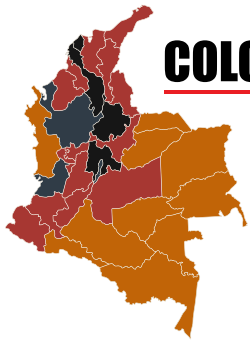


INDONESIA



COLOMBIA



USA Office:

142 North Linden Ave, 502 Orrville,

Ohio 44667, USA

T: 1 (786) 866 8798

T: 1 (786) 634 5202

T: 1 (330) 886 8777

E: imex@imexbz.com

W: www.imexbz.com

Belize Office:

74 Bella Vista

Belize City, Belize C. A.

T: + (501) 223 5600

T: + (501) 223 5200

E: logistex@belize.imexbz.com

Carbón de Termoelectricidad

STEAM COAL

ABOUT US



IMEX BZ LLC, incorporated in the USA in 2015, is part of the HOLDEX HOLDINGS enterprise that has been in business since 1988 and specializes in supplying products internationally. With professional, experienced staff and an extensive network of direct suppliers, supported by reputable financial and logistics service partners, IMEX BZ LLC is able to consistently provide quality products and reliable services.



IMEX BZ LLC: China Office Director - Dennis Kao & CEO - Roger Taylor
Coal Stock Pile (South Kalimantan - Indonesia) October 2023

ABOUT US



Given our strategic partnership with leading Indonesian mining operators, we can supply coal of different specifications directly from various mine sites in Indonesia. The coal operations at IMEX BZ LLC can provide oversight on pit-to-port activities to ensure coal quality and the process of production, transportation and testing for requirements. We can (e.g., in excess of shipment) and has the to ensure timely delivery based on the buyer's needs.

each shipment meets buyer handle large shipments 150,000 MT per logistics capability and frequent



Grasp the Power: Our Commitment to Quality in Every Handful.

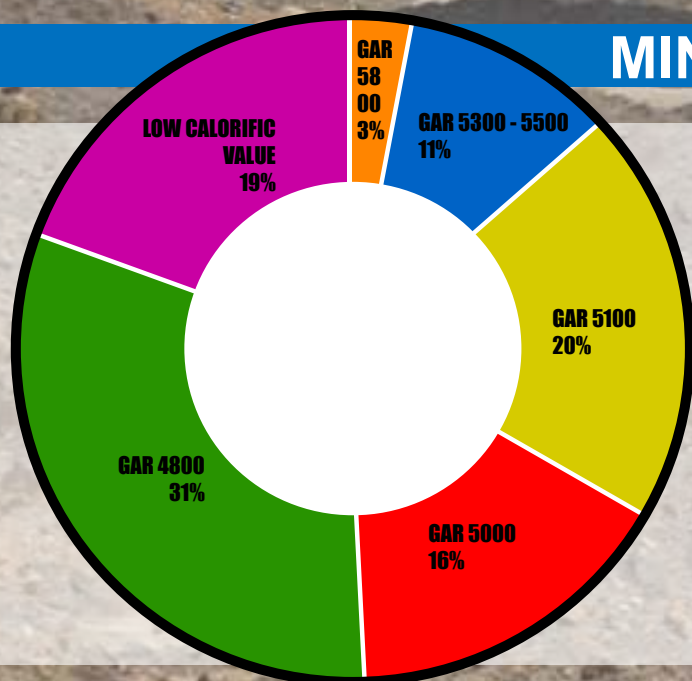


INDONESIAN COAL INDEX (ICI) - SPECIFICATION

FOB

GRADE (KCAL)	Approx. BTU	TIMING	SULPHUR	ASH	TM	SIZE
6500 GAR (6200 NAR)	11,700	In 60 days	Up to 1 %	Up to 12 %	Up to 12 %	Panamax
5800 GAR (5500 NAR)	10,440	In 60 days	Up to 0.8 %	Up to 10 %	Up to 18 %	Panamax
5000 GAR (4600 NAR)	9,000	In 60 days	Up to 0.6 %	Up to 8 %	Up to 30 %	Panamax
4200 GAR (3800 NAR)	7,560	In 60 days	Up to 0.4 %	Up to 6 %	Up to 40 %	Mother Vessel
3400 GAR (3000 NAR)	6,120	In 60 days	Up to 0.2 %	Up to 4 %	Up to 50 %	Mother Vessel

MINING OPERATION OVERVIEW



MINING OUTPUT (Several Mines)

- Average Daily Mining Output per mine sites range from 5,500 to 25,000 MT
- TOTAL Monthly Mining Output: ~800k MT
- TOTAL Annual Mining Output: ~10m MT



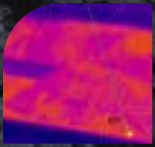
KEY INFRASTRUCTURE

- Multiple stockyards with large holding capacity
- Dedicated truck Fleet
- Multiple Jetty Platforms with fast loading capability
- Short turnaround from stockyard to vessel for quick delivery



QUALITY SAFETY DEVICES

Tools used to maintain quality and delivery control



Thermo Couple | Detectors

Determine the coal temperature in the stockpile to prevent loading high-temperature cargo, which can lead to combustion while in the barge.



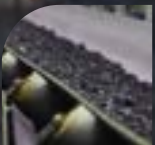
Metal Detector

When metal is detected, the system triggers an immediate shutdown of the conveyor belt. This action stops the movement of coal, allowing for the safe and efficient removal of the metal item from the conveyor belt.



Metal Catcher

To prevent coal cargo containing metal from passing through the belt loading conveyor (BLC), a metal catcher is used. This system is designed to detect and remove metal contaminants from coal cargo, ensuring the safety and integrity of the material.



Coal Coating

To reduce the possibility of coal oxidation and spontaneous combustion, a chemical coating is applied to the coal surface. This coating acts as a barrier to oxygen, thereby limiting the oxidation process.



Operation Control Room

An effective operation control room is essential for monitoring and managing various aspects of coal operations, including coal quality, delivery performance, production progress, and geotechnical issues.



From Earth
to Transport:
Precision in Every Load.

Loading Trucks at Mines to Transport to Stock Piles (South Kalimantan -
Indonesia) October 2023



Variety in Abundance: Explore the Diverse Energy We Offer.

Precision in Every Pile: Sorting Excellence on the Conveyor Belt.

Water Draining from the Stock Piles
(South Kalimantan - Indonesia) October 2023

**Efficiency Unleashed: Environmental
Care in Every Drop.**

**Measured Might: Every Ton Delivered
with Precision.**

Balancing Energy: Where Every Load is a Promise Kept.




Onward to Destination: A Fleet of Reliability in Motion.

Trucks Transporting Coal to the Jetty
(South Kalimantan - Indonesia) October 2023

Seamless Flow: Where Every Belt Transforms Coal into Progress.



Navigating Energy: Loading Barges, Connecting Continents.

The background image shows a large-scale industrial operation. A long, dark-colored barge is docked at a pier. A large, green metal conveyor structure extends from the pier over the barge, used for loading coal. The water is a muddy brown color. The sky is blue with scattered white clouds. The word 'TONASA' is visible on the side of the barge.


Coal being loaded into barges
(South Kalimantan - Indonesia) October 2023



Seamless Transition: From Land to Water, Coal's Journey Continues.

Coal Transported through the river to the Vessel Loading Point
(South Kalimantan - Indonesia) October 2023

**River of Energy: Our Barges,
Carrying Power to Your Doorstep.**



Team IMEX BZ LLC at the Barge Loading
(South Kalimantan - Indonesia) October 2023

**Beyond Boundaries: Our Team, Your
Trusted Energy Partners.**



JETTY TO BARGES
Desde el muelle a las barcazas



RIVER TRANSPORT
Transporte fluvial de carbón



TUGBOAT TRANSPORTATION
Transporte con remolcador



CLAMJAW LOADING
Transporte con remolcador



SGS INSPECTION
Inspección SGS



DEDICATED TEAM WORK
Trabajo en equipo dedicado



ANCHORAGE POINT
Punto de anclaje



VESSEL LOADING
Carga de buques



SAIL TO DESTINATION
Navegar hacia el destino







ImexBZ LLC